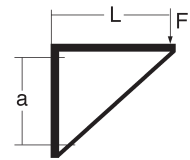
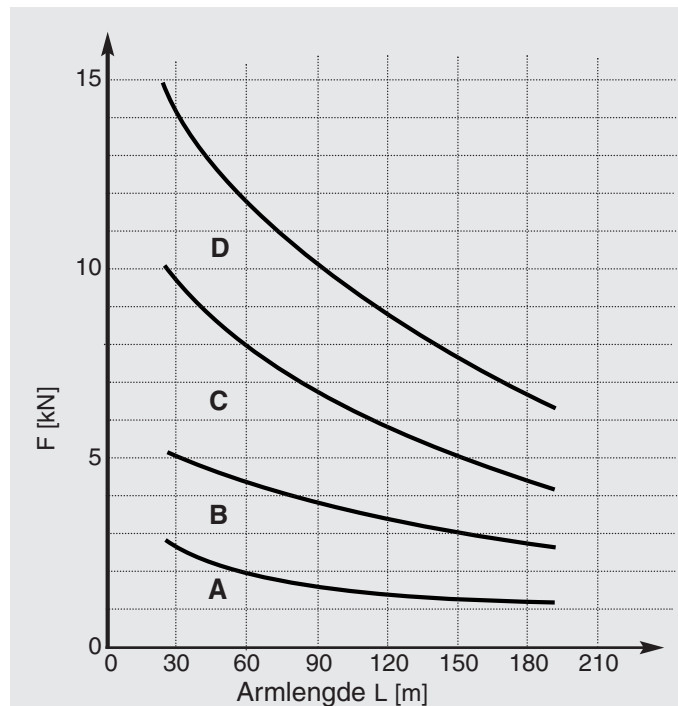
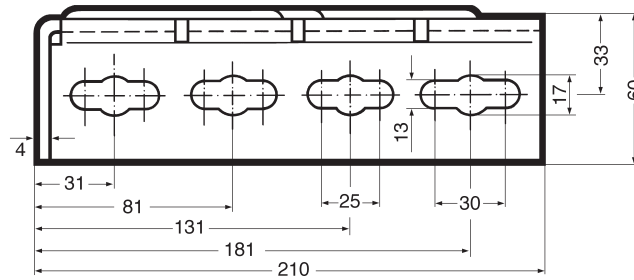


Vinkelkonsoll 200/200, belastningsdiagram



Ankerklasse
(over/under):

- A = 1,5/1,5 [kN]
- B = 3,5/2,5 [kN]
- C = 6,0/6,0 [kN]
- D = 9,0/9,0 [kN]

a = 165 mm

f ≤ 2 mm

$\sigma_{\text{tillatt}} \leq 160 \text{ N/mm}^2$